

# superline 600 DUAL

electric water heater



SUPPLY OF SUPERIOR  
**RELIABLE**  
DOMESTIC WATER HEATING  
SOLUTIONS

SABS  
ISO 9001

 SA Watermark

DOMESTIC ELECTRIC WATER HEATER



**superline**  
**600**  
**DUAL**  
electric water heater



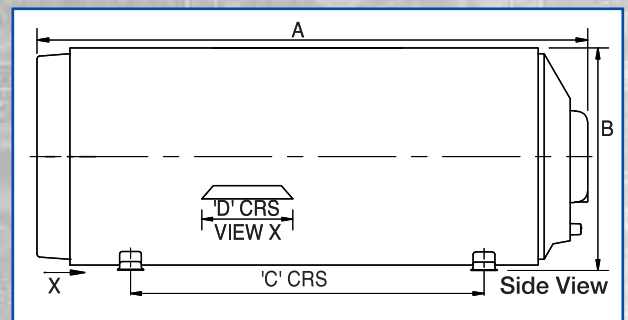
Renewable energy ready connection

### product features

- The Kwikot Superline 600 Dual is a high pressure electric water heater available in a 150 litre and is SANS 151 **600kPa** approved.
- The inner cylinder is manufactured from enamel quality steel and is thermofused porcelain enamelled for corrosion protection and hygiene.
- A lower energy loss, a more efficient electric water heater. **B rating energy efficient.**
- The polyurethane insulation between the inner cylinder and the outer galvanised casement is **128%** thicker, resulting in the hourly standing heat loss decreasing from 108 watts per hour to 50 watts per hour, a 50% decrease versus previous D rated energy efficient water heaters.
- Renewable energy ready for a Solar Retrofit System or a Heat Pump.
- The units can be installed horizontally or vertically. (See product installation data).

### product specification data

Complies to SANS 151 Specifications and are SA Watermark listed.



### product installation data

The Kwikot Superline 600 Dual must be installed in compliance with SANS 10254 Installation and Maintenance of Electric Storage Water Heaters. A Kwikot Temperature & Pressure Safety Valve and a Kwikot Drain Cock are both supplied with the water heater. A SANS approved Pressure Control Valve, Drip Tray and Vacuum Breakers must form part of the installation and must be purchased additionally. The Kwikot Superline 600 Dual water heater is IPX4 rated.

The 150lt can be installed horizontally on the floor (in the roof) and wall mounted vertically or horizontally left hand, or horizontally right hand.

In a horizontal wall mounting installation, the brackets (feet) need to be moved by 90° to the alternative holes in the outer casement. In a vertical wall mounting installation, the brackets (feet) are not moved to the alternative holes in the outer casement.

**Electrolux SA(Pty) Ltd** cannot be held responsible should a water heater pull out or fall off a wall. The installation is the responsibility of the installer.

The following minimum installation clearance must be allowed for on each side in the event of having to remove the element, thermostat or the anode: 150 lt - 800mm.

### product warranties

The period of warranty is from the date of installation providing that documentation of proof of installation is furnished, or alternatively from date of manufacture as determined from the serial plate on the end dome.

The warranty is subject to only genuine Kwikot replacement parts (spiral element and thermostat etc) been used whilst

the inner cylinders are still under warranty. The warranties are applicable to South Africa, Namibia, Lesotho, Swaziland and

Botswana and are subject to water conditions equivalent to main Metropolitan supply authorities.

- Five years on the inner cylinder.
- One year on the spiral element, thermostat, isolator switch, flange assembly plate and gasket.
- Two years on the Safety Valve and Drain Cock.
- The warranty on the installation is the responsibility of the installer.

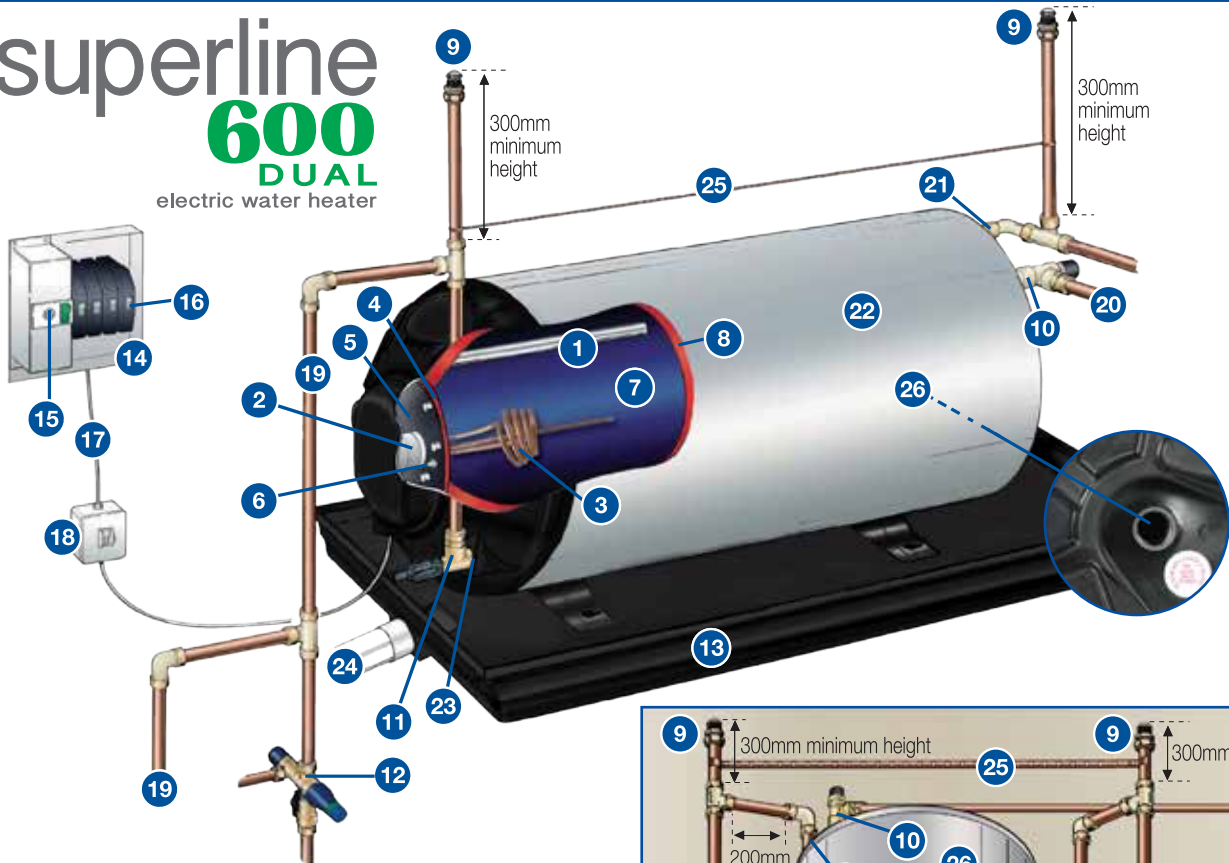


Product Code	DSG -150
Capacity (Litres)	150
Element Rating (kW)	3
Operating Pressure (kPa)	Up to 600
Mass Empty (kg)	39
Connections Male Iron (mm)	20
Dimension A (mm)	1320
Dimension B (mm)	543
Dimension C (mm)	865
Dimension D (mm)	355

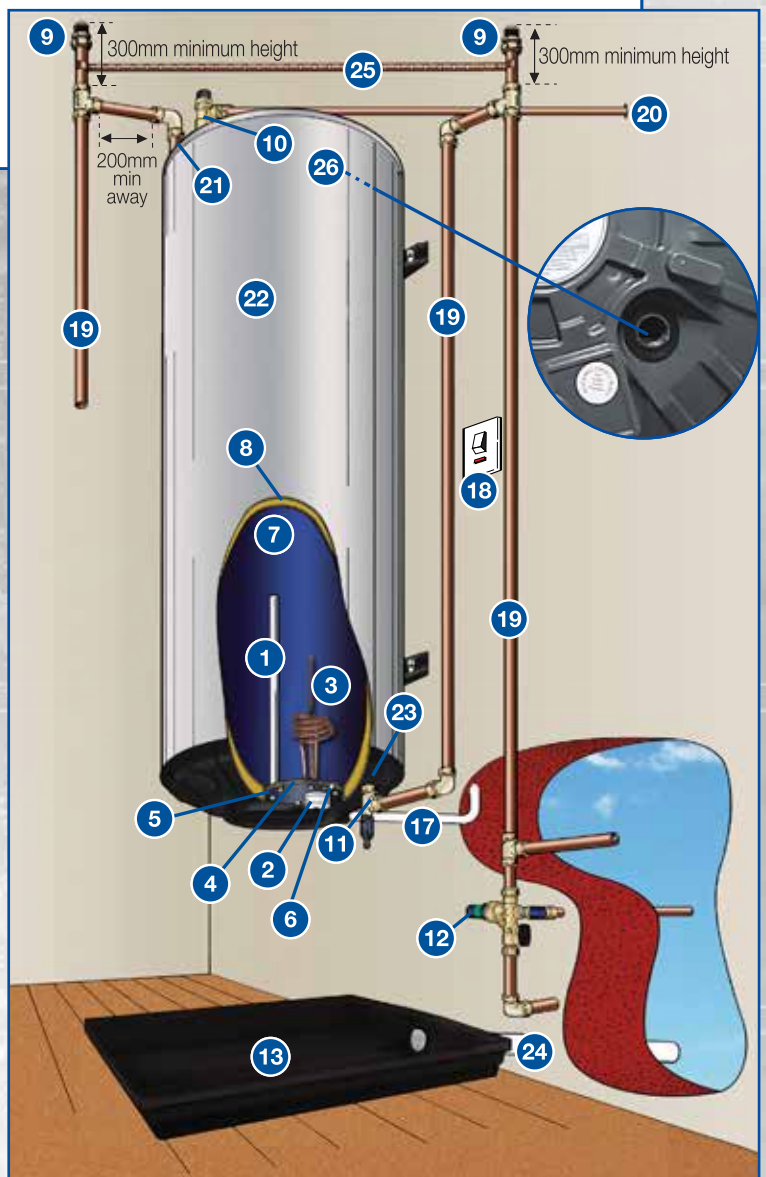


# superline 600 DUAL

electric water heater



## product installation: horizontal and vertical



### Product Description

1	Anode
2	Kwikot Thermostat TH208, 20Amp
3	Kwikot Spiral Element
4	Flange Gasket (100mm)
5	Flange (100mm)
6	Earth Stud
7	Thermofused Porcelain Enamel Lining
8	Urethane Insulation
9	Vacuum Breaker
10	Kwikot Safety Valve (600kPa)
11	Kwikot Draincock
12	Pressure Control Valve (600kPa)
13	Geyser Tray
14	Distribution Board
15	Earth Leakage - 60 Amp
16	Geyser Circuit Breaker
17	Cable Size, Minimum of 2,5mm <sup>2</sup>
18	Isolating Switch within 1m from Electrical Connection on Geyser
19	Copper Pipe
20	Overflow Pipe to Exterior of Building, 20mm Metallic
21	Hot Water Outlet
22	Kwikot Superline Dual Geyser (600kPa)
23	Cold Water Inlet
24	Geyser Tray Overflow Pipe, 50mm
25	Earth Bonding Strap between Hot and Cold Water
26	Renewable Energy Ready Connection (on back end dome)

Electrolux SA (Pty) Ltd



www.kwikot.com

#### Inland

3 Aberdeen Road,  
Industrial Sites,  
Benoni  
Tel: (011) 897 4600  
Email:  
Sales.Inland@electrolux.com  
Sales.Export@electrolux.com

#### Eastern Cape

39-41 Leadwood Crescent,  
Fairview,  
Port Elizabeth  
Tel: (041) 399 4000  
Email:  
Sales.Easterncape@electrolux.com

#### Western Cape

15 Purdey Road,  
Sheffield Business Park, Phillippi,  
Cape Town  
Tel: (021) 690 2700  
Email:  
Sales.Westerncape@electrolux.com

#### Kwazulu-Natal

814 Peter Close,  
Springfield Park,  
Durban  
Tel: (031) 574 8700  
Email:  
Sales.Kwazulunatal@electrolux.com

#### Support

Email:  
Technical.Info@electrolux.com  
Kwikot.MarketingInfo@electrolux.com